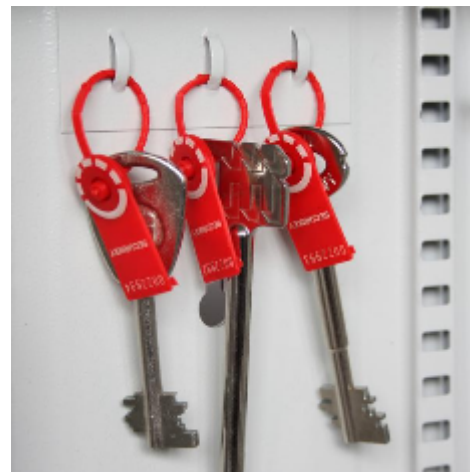


Key Vault for 400 keys - £1140



Key Vault 400

- Heavy duty key cabinet designed to meet the growing need for added security
- 2.5mm fabricated steel cabinet with flush closing door to resist forced entry
- Locking by security deadlock with 5-pin Euro profile cylinder & 2 keys
- Adjustable colour coded and numbered hook bars allow the layout to be customised
- Ingenious key tabs are designed to hang so that the number is always visible
- Closed loops included for use with optional security seals
- Key locations can be recorded on the control index which is removable for added security
- Use your own cylinder to incorporate the cabinet into an existing suited system
- Cylinder can be easily changed in seconds to ensure total security
- Durable Light Grey paint finish will suit most environments

Specification

SKU	KV400
Standard	Silver
Capacity	400 keys
Locking Options	3/4 Wheel Mechanical Combination