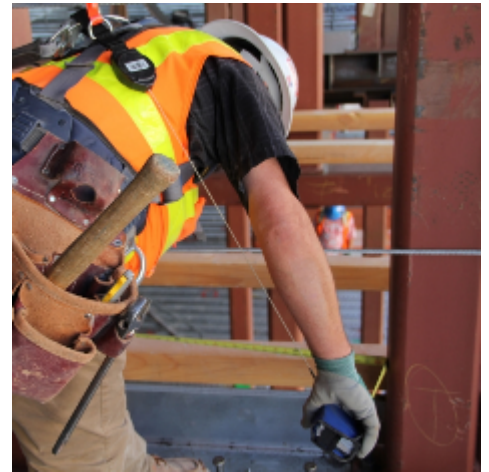


Toolmate Tape Measure Jacket



Toolmate Tape Measure Jacket

- Prevents accidents and injuries caused by dropped tape measure
- The most advanced tape measure tool tethering solution on the market
- Manufactured from tough Polyester
- Quickly attaches to the most commonly used tape measures
- Can be used with 'switch locking' or 'squeeze type' measures
- **ANSI 121-2018 Certified** and dynamically drop tested by a 3rd party. Patent Pending
- Note - Measure not included

Specification

SKU	RTM-LTMJ
-----	----------